

# T7 Disk Model ec-H2O NanoClean Affiliate Kit



This kit includes the necessary parts to convert a standard disk model into an ec-H2O™ NanoClean model. The kit is intended for T7 models manufactured after serial number 10740597 (March 31, 2015).

## INSTALLATION INSTRUCTIONS:

**Installation Time: 4 Hours**

**Special Tools Required:** Cartridge By-Pass Tool to test machine for leaks after install (provided separately).

## PREPARE MACHINE FOR KIT INSTALL:

1. Drain the solution and recovery tanks.
2. Park the machine on a level surface, lower the scrub head and remove the key.
3. Disconnect the seat wire harness connector and lift seat from machine (Figure 1).

**FOR SAFETY: When servicing machine wear personal protection equipment as needed.**

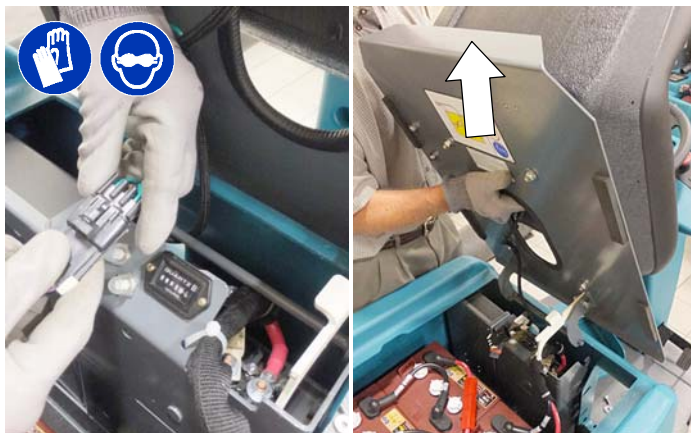


Fig. 1

3. Remove the small box from the battery compartment shroud to access the two mounting screws that secures shroud. Remove screws and lift battery compartment shroud from machine (Figure 2).

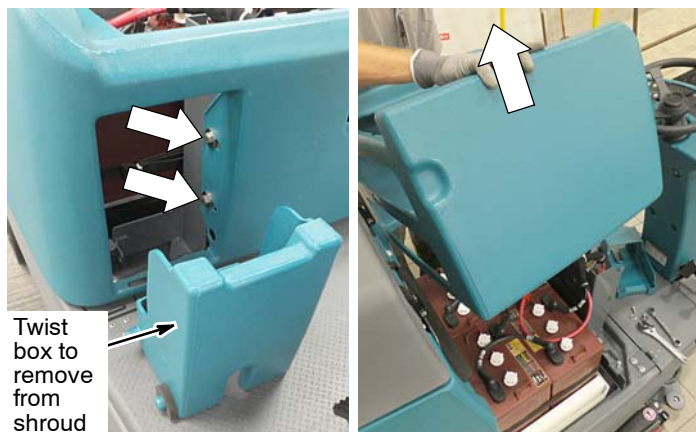


Fig. 2

4. Remove batteries and battery tray from the machine.

5. Disconnect steering wheel and instrument panels from steering column. Remove four screws and lift steering column housing from column (Figure 3).



Fig. 3

6. Remove scrub head from machine. To remove, pull 4 pins from scrub head assembly as shown. Disconnect brush motor wire connectors, solution hose connection, solution valve wires and ground wire from scrub head. Carefully slide scrub head out from under machine (Figure 4).

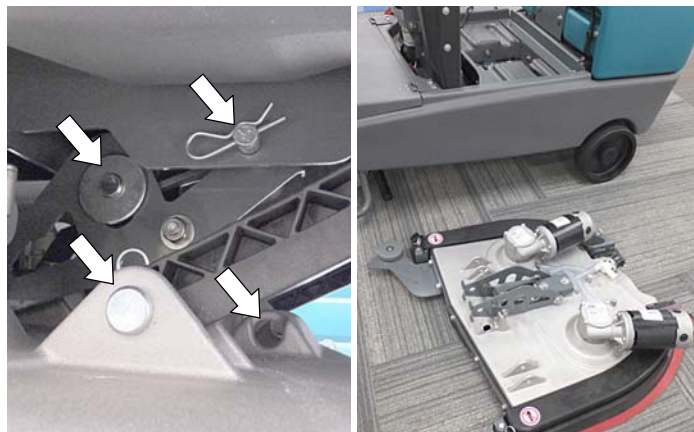
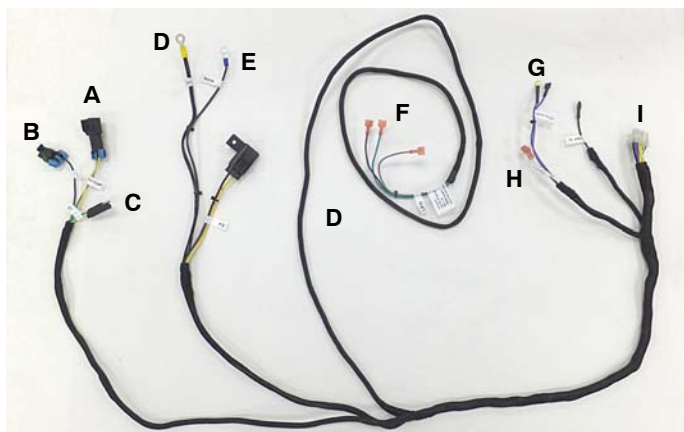


Fig. 4

**INSTALL ec-H2O WIRE HARNESS:**

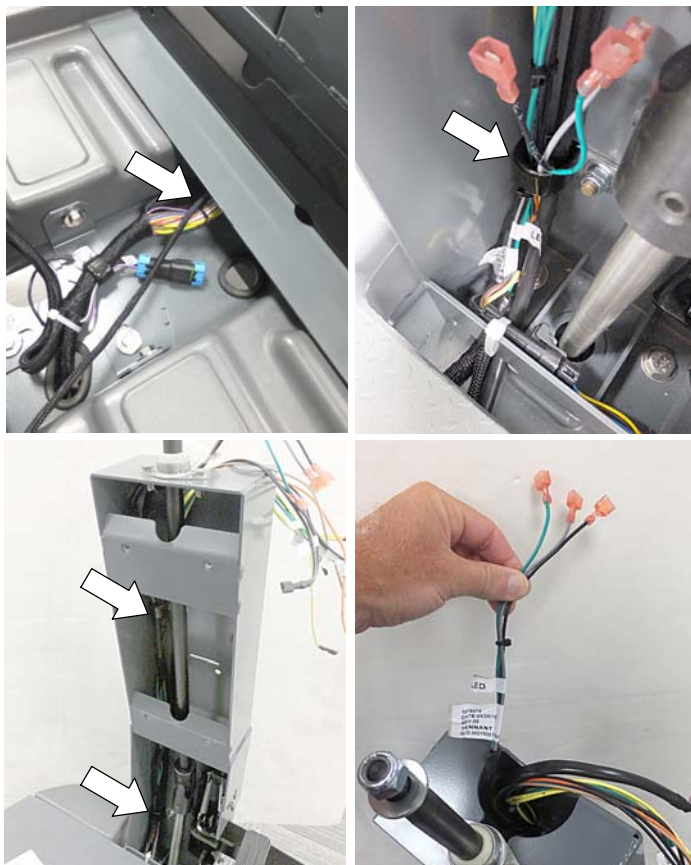
- Using the below wire code diagram for reference, route the ec-H2O wire harness [p/n 1074374] as described in following steps (Figure 5).



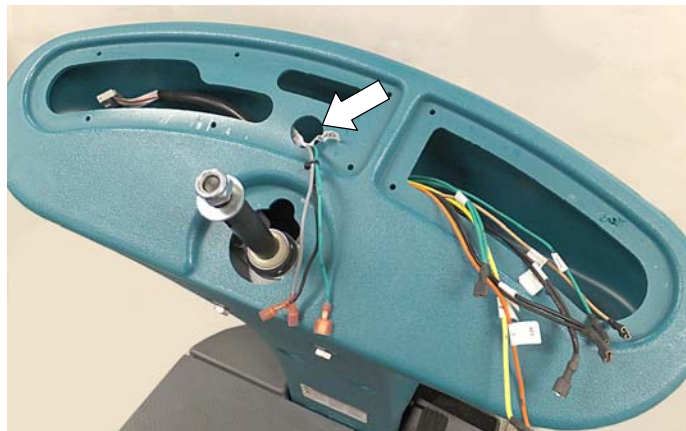
A = ec-H2O Pump  
 B = Main Harness  
 C = C1 Capacitor  
 D = Negative Stand-off - Control Board  
 E = Main - Control Broad Contractor  
 F = ec-H2O LED  
 G = ec-H2O Water Conditioning Module Pump  
 H = Pressure Switch  
 I = ec-H2O Module

**Fig. 5**

- Starting from inside the battery compartment, route the LED wires (F) under the solution tank and up the steering column as shown. Route the wires through the existing wire harness clamps (Figure 6).

**Fig. 6**

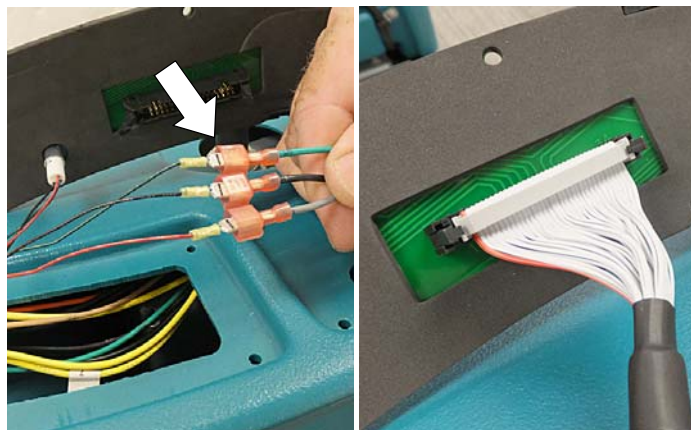
- Re-install the steering column housing using the 4 mounting screws. Route the LED wires through the small round hole as shown (Figure 7).

**Fig. 7**

- Using the control panel cover from the existing instrument panel, assemble the following parts as shown (Figure 8).

**Fig. 8**

- Connect the ec-H2O harness wires to LED light (green to green, black to black and red to gray) (Figure 9). Plug the existing wire connector into new panel as shown. Using the existing mounting screws, fasten new instrument panel to steering column housing

**Fig. 9**

6. Reconnect wires to key switch panel components as shown and replace panel (Figure 10).

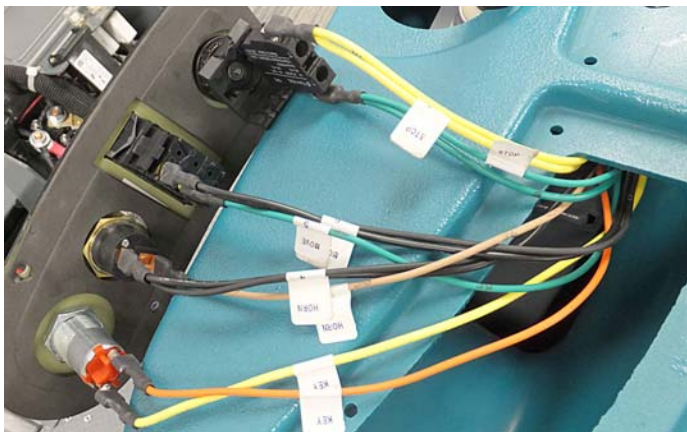


Fig. 10

7. Replace steering wheel.  
8. Route the main and negative stand-off wires (D, E) under machine frame to control board area as shown (Figure 11).

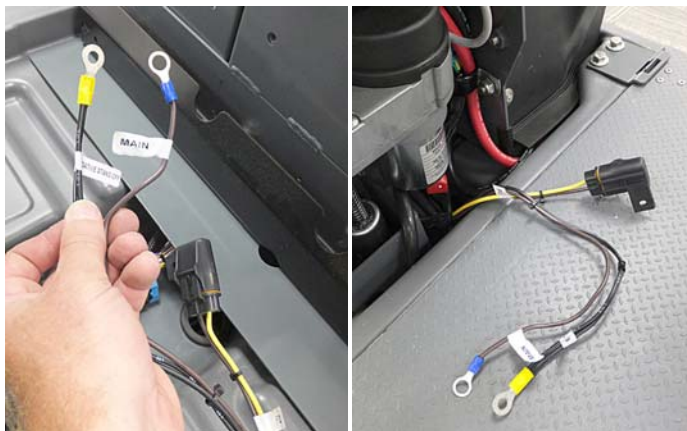


Fig. 11

9. Route the two wires up through control panel grommet. Connect brown wire to main contactor and black wire to negative stand-off terminal (Figure 12).

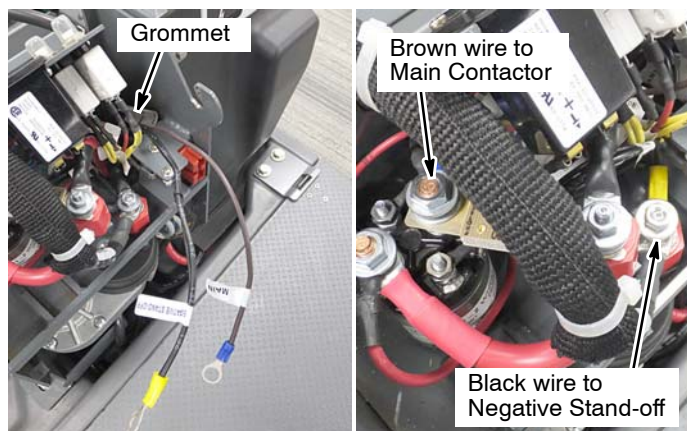


Fig. 12

10. Route the ec-H2O module, pressure switch and cartridge pump wires (G, H, I) under machine frame as shown (Figure 13).



Fig. 13

11. Route the main harness connector, ec-H2O pump connector and capacitor plug (A, B, C) through grommet as shown (Figure 14).



Fig. 14

### INSTALL ec-H2O PUMP ASSEMBLY:

1. On a level non-marring surface, with assistance, carefully lay the machine on its right side (Figure 15).



Fig. 15

2. Continue routing the main harness connector, ec-H2O pump connector and capacitor plug (A, B, C) through frame grommet as shown (Figure 16).



Fig. 16

3. Locate the factory installed plug connector wire-tied to machine harness as shown. Cut wire-tie and connect the main harness connector (B) into machine harness (Figure 17). Secure with wire-tie.

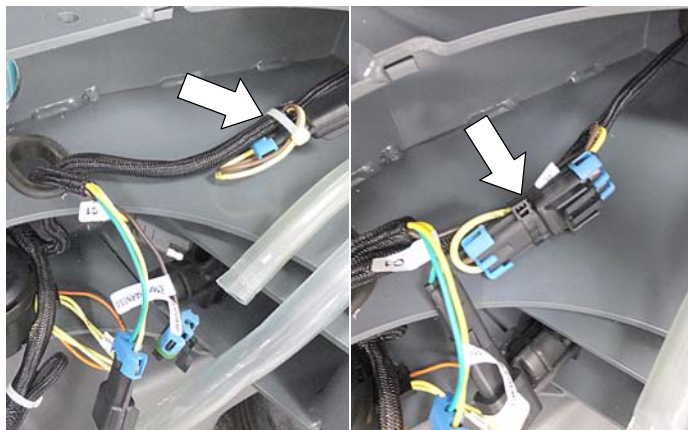


Fig. 17

4. Using two M8x1.25x20 hex sems screws, connect the ec-H2O pump assembly to machine frame as shown (Figure 18).

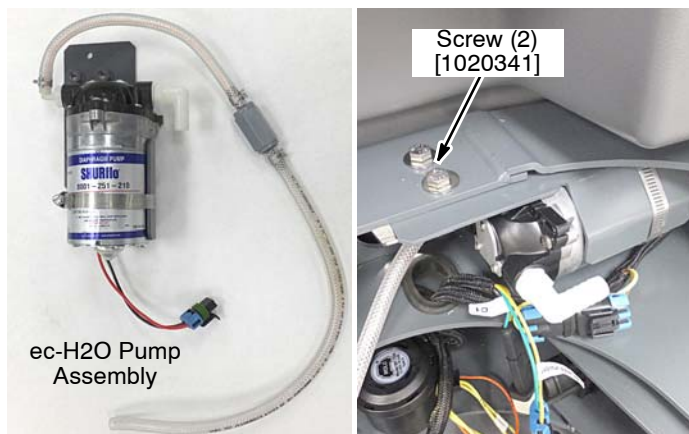


Fig. 18

5. Connect the ec-H2O wire harness pump connector to pump (Figure 19). Connect the capacitor plug into ec-H2O harness connector (C).



Fig. 19

6. Cut end of solution hose to remove hose plug. Using clamp, connect solution hose to pump as shown (Figure 20).

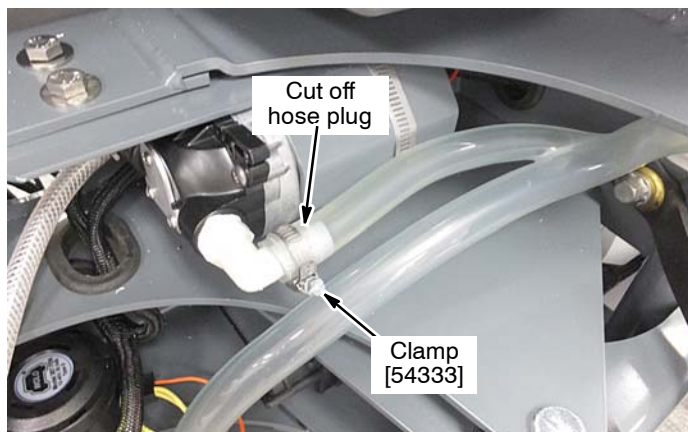


Fig. 20

7. Install grommet into machine frame and route the solution hose from pump up through grommet (Figure 21). Make sure the arrow located on the check valve points towards the grommet.

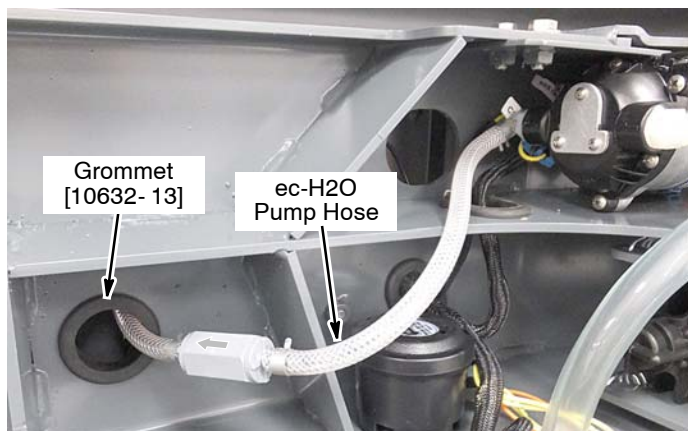


Fig. 21

8. Carefully stand machine upright.

9. After machine is turned upright, continue routing the ec-H<sub>2</sub>O pump solution hose as shown (Figure 21).



Fig. 22

10. Using clamp [607775], connect hose fitting [20950] to solution hose [376720] (Figure 23). Route the solution hose towards the scrub head area following the same path as the ec-H<sub>2</sub>O pump solution hose as shown in Figure 22. The hose fitting end goes towards scrub head area.

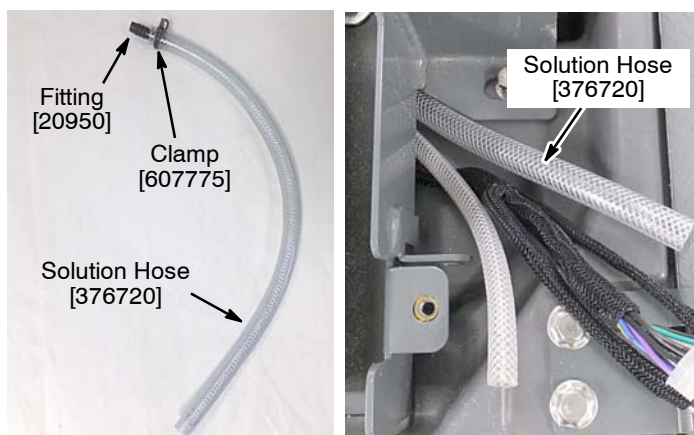


Fig. 23

### PREPARE SCRUB HEAD:

1. Carefully turn scrub head over and install hose support brackets at each motor hub location as shown (Figure 24).



Fig. 24

2. Cut the hose plug off from the manifold hose as shown (Figure 25).

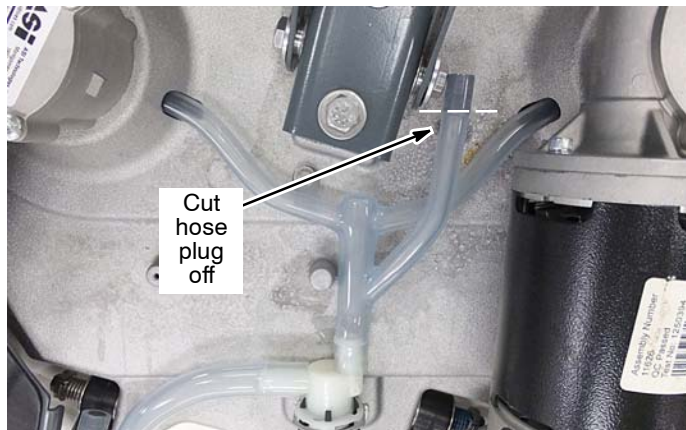


Fig. 25

3. Re-install the scrub head on machine with four pins (Figure 26). Reconnect brush motor wire connectors, solution hose connection, solution valve wires and ground wire to scrub head.

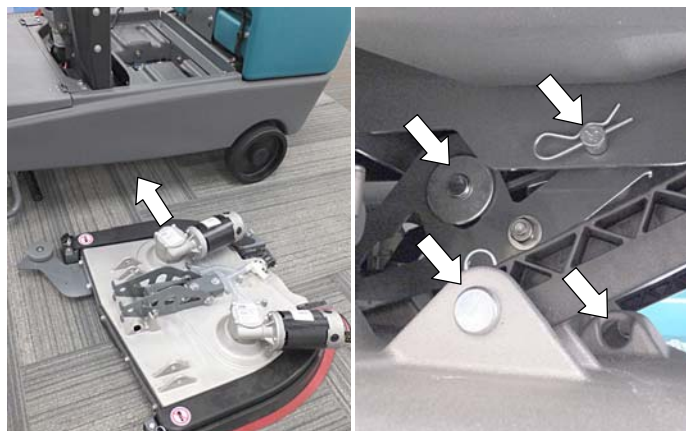


Fig. 26

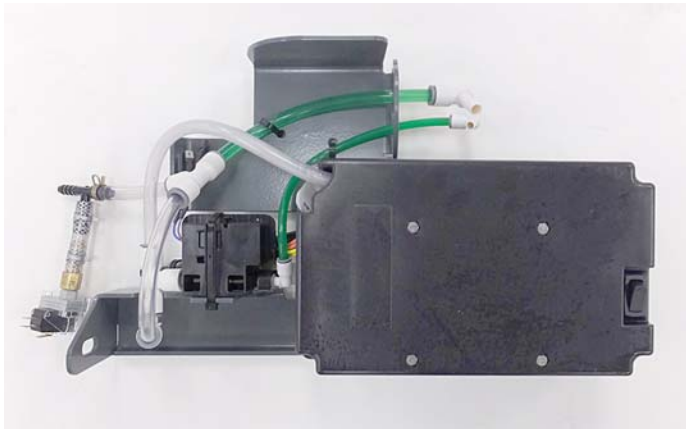
### INSTALL ec-H<sub>2</sub>O MODULE ASSEMBLY:

1. Remove the two screws shown from machine frame to mount ec-H<sub>2</sub>O module assembly (Figure 27).



Fig. 27

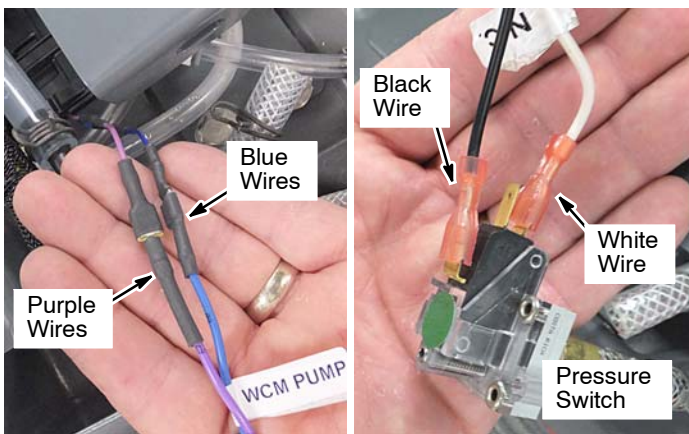
2. Before mounting the ec-H2O module assembly to machine, connect the solution hoses and ec-H2O harness wires to module as described in following steps (Figure 28).

**Fig. 28**

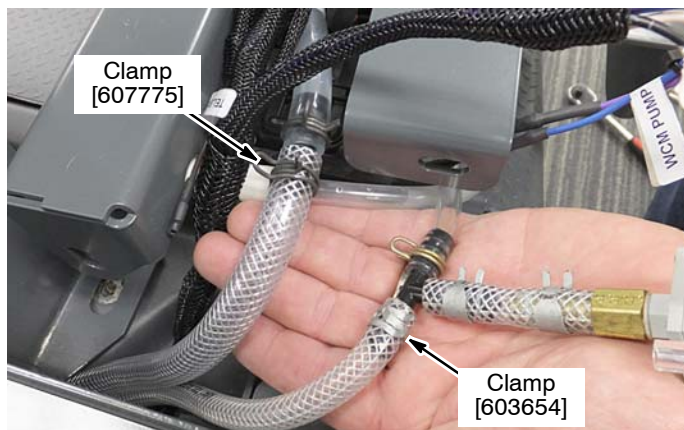
3. Plug the ec-H2O wire harness connector (I) into module (Figure 29).

**Fig. 29**

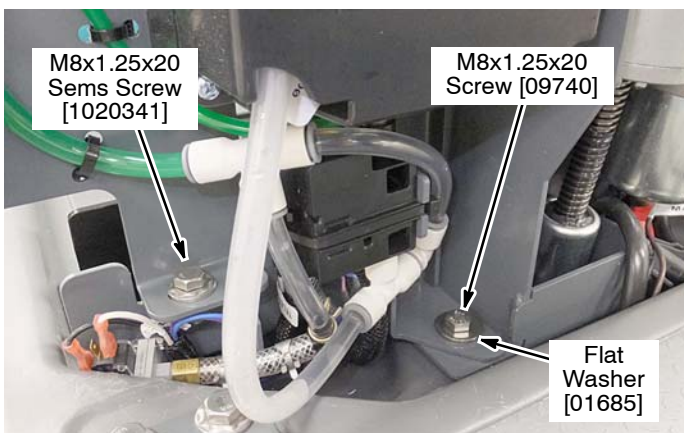
4. Connect the ec-H2O harness wires (G, H) to cartridge pump and pressure switch as shown (Figure 30).

**Fig. 30**

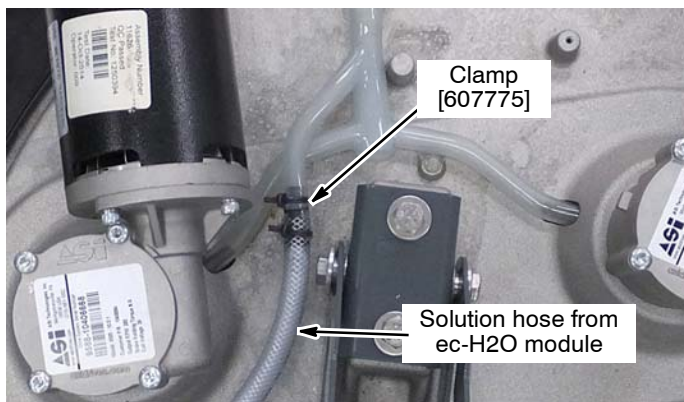
5. Connect the two routed ec-H2O solution hoses to module as shown (Figure 30).

**Fig. 31**

6. Mount the ec-H2O module assembly to machine frame with hardware as shown (Figure 32).

**Fig. 32**

7. At scrub head, connect the routed solution hose from ec-H2O module to the solution hose manifold using clamp as shown (Figure 33)

**Fig. 33**

## PREPARE THE BATTERY COMPARTMENT SHROUD AND SEAT PANEL FOR INSTALLATION:

1. Install cover bracket into the battery compartment shroud opening using hardware as shown (Figure 34).



Cover Bracket [1051138]  
2 Screws [09740]  
4 Washers [1017218]  
2 Nuts [08713]



Fig. 34

2. Cut the foam adhesive strip [376784] into four 10cm/4 inch pieces (Figure 35).



Fig. 35

3. Apply the four foam strips to bottom of seat panel as shown (Figure 36).



Fig. 36

4. Re-install the battery tray and batteries in machine.
5. Re-install the seat panel and reconnect the seat wire harness. **Do not** re-stall and the battery compartment shroud at this time, the ec-H2O system will need to be tested for leaks first as described later in the instructions.

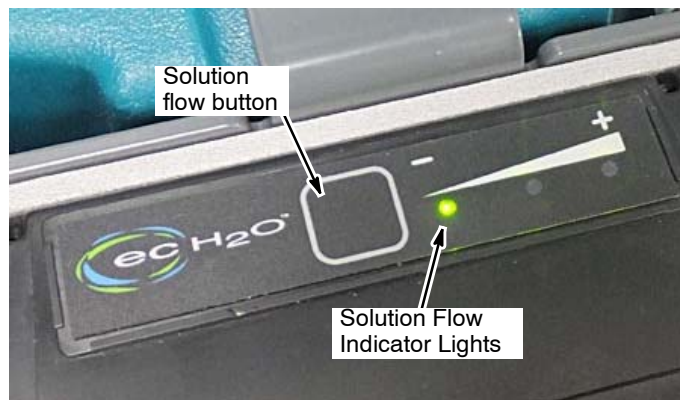
## PROGRAM THE ec-H2O MODULE:

### Set Machine Configuration:

Refer to table below for proper machine configuration.

1. Turn key to the on position.
2. To view the current machine configuration, press and hold the solution flow button on the ec-H2O module. The solution flow lights will momentarily turn off after 2 seconds. Release the button when the LEFT solution flow indicator light turns on, in approximately 4 seconds (Figure 37). When the button is released, the solution flow indicators will blink the current machine configuration for 10 seconds (see Table). After the 10 second window, the lights will revert back to normal operation. Repeat step to re-enter program.

**Attention:** If you hold the solution flow button too long, you may enter the firmware mode. To exit from this mode, press the solution flow button and repeat step 2.



Solution Flow Indicator Lights (Machine Configuration)	Machine/Scrub Head Size
★ ★ ●	T5/T5e/A5 (600/650mm)
● ● ★	T5/T5e/A5 (700/800mm)
★ ● ★	T7
★ ● ●	5680/5700/XP (900mm)
● ★ ●	5680/5700/XP (700mm/800mm)

Fig. 37

3. To change the machine configuration, repeat step 2. While the indicator lights are blinking (within the 10 second window), press the solution flow button to cycle through the machine configurations as shown in Table (Figure 37). Each press will advance to next setting. After selecting the desired setting, wait 5 seconds for module to save setting and revert back to normal operation.
4. Turn key to the OFF position.

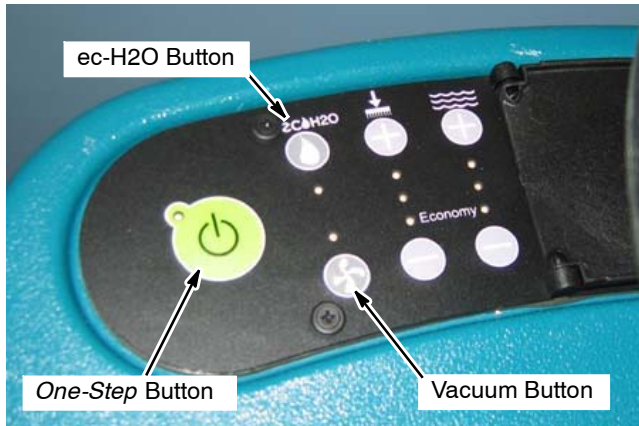
### **Operate the Self-Test Mode to Recognize the ec-H2O System:**

1. Press and **hold** down the ec-H2O button and Vacuum button (Figure 38).
2. Turn the key switch to the ON ( I ) position.
3. Wait 10 seconds then release the two buttons.

The self- test mode will take approximately 40 seconds to run.

After the self- test mode is complete, the *One-Step* button LED should be lit solid.

If a LED is blinking, an open wire connection was found. Check all wire connections and repeat test.

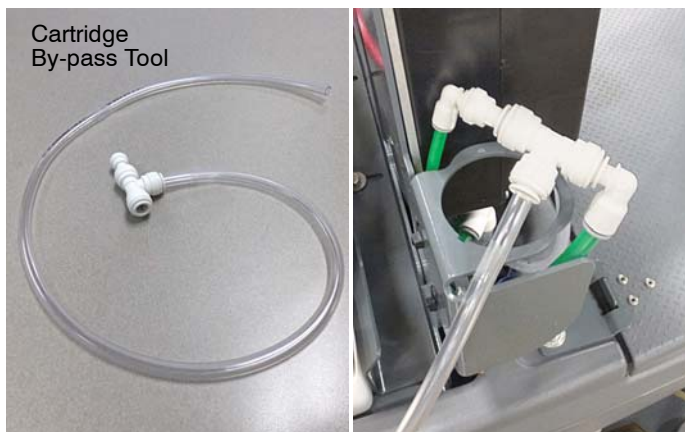


**Fig. 38**

### **CHECK THE ec-H2O NanoClean SYSTEM FOR PROPER OPERATION:**

To ensure the ec-H2O NanoClean system is operating properly, perform the following.

1. Connect the cartridge by-pass tool, provided separately, to the two green hoses as shown. Route the clear discharge hose to the floor. The use of the cartridge by-pass tool is to prevent activating the ec-H2O water conditioning cartridge during the check process (Figure 39).



**Fig. 39**

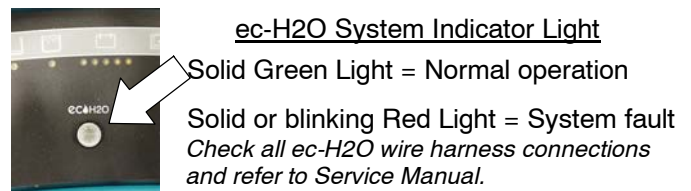
2. Fill solution tank with cool clean water (less than 21°C/70°F). Do not add any conventional floor cleaning detergents, system failure may result.

3. Turn the key to the on ( I ) position. Verify that the 4 LED's on the module flash on for one second and then turn off, followed by displaying the current flow rate setting (Figure 40).



**Fig. 40**

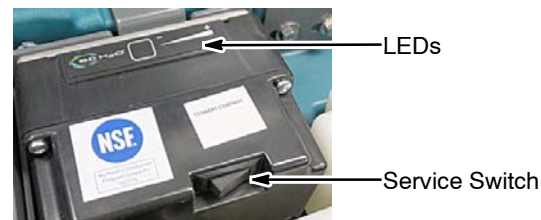
4. Press the ec-H2O system button to the on ( I ) position.
5. The ec-H2O system indicator light will turn on when the propel pedal is pressed (Figure 41).



**Fig. 41**

6. Operate the ec-H2O module in Manual Mode (See NOTE below). Verify that the ec-H2O system is putting water on the floor at the scrub head and at the By-Pass Tool hose.
7. Check all ec-H2O system hose connections for water leaks.

**NOTE:** To enter the module's Manual Mode, depress and hold the service switch for 20 seconds and release (Figure 42). The first and third green LEDs will alternate on and off indicating that you are in the Manual Mode and the ec-H2O pump will be operating. To exit the Manual Mode, depress the Service Switch for one second and release. The module will also exit the manual mode automatically after 7 minutes.



**Fig. 42**

8. After checking machine for proper operation or possible leaks, drain all tanks and vacuum out any residual water. With the ec-H2O module in Manual Mode, attach the hose from the By-pass Tool to a vacuum unit and vacuum out any remaining water from module.
9. Exit the Manual Mode and remove the Cartridge By-pass Tool from machine. To exit Manual Mode, depress the Service Switch for one second and release.

## INSTALL ec-H<sub>2</sub>O WATER CONDITIONING CARTRIDGE:

1. Check the manufacture date on the Water Conditioning Cartridge before installing. The shelf-life of an un-installed cartridge is one year from manufacture date. Discard cartridge if shelf-life has expired. For replacement Cartridge, order p/n 9013646.
2. Fill in the installation date on the Water Conditioning Cartridge label (Figure 43).



Fig. 43

3. Remove the two plugs from cartridge. Press the gray collars inward and pull plugs outward to remove (Figure 44). Position the cartridge in the cartridge holder bracket as shown and connect green hoses to cartridge (Figure 44). Make sure the hose connectors are fully inserted.



Fig. 44

## Set Timer for Water Conditioning Cartridge:

Carefully read and understand the following steps before performing procedure.

1. Turn key to the on position (Figure 45).
2. Press and hold the service switch on the module for 10 seconds. After releasing the service switch, the three solution flow indicator lights will begin to (ripple) move back and forth.

**Attention:** If you hold the service switch too long, the 1<sup>st</sup> and 3<sup>rd</sup> lights will alternate on and off. If this happens, press and release the service switch and repeat step 2.

3. Within 5 seconds after releasing the service switch, while the three indicator lights are still moving back and forth (ripple), press the quickly release the solution flow button located on ec-H<sub>2</sub>O module.
4. The indicator lights will then blink three times to confirm timer has been set. Repeat process if the three indicator lights do not blink three times.

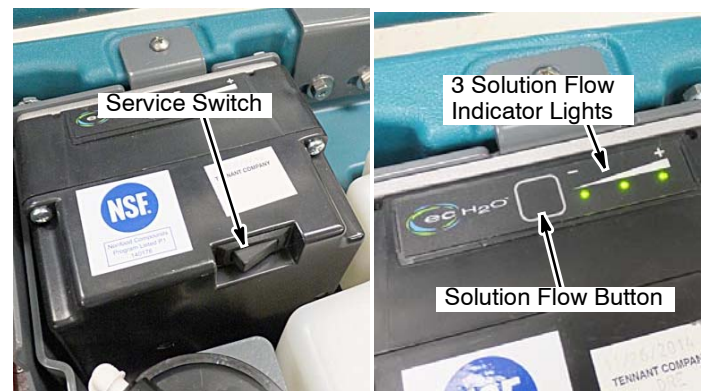


Fig. 45

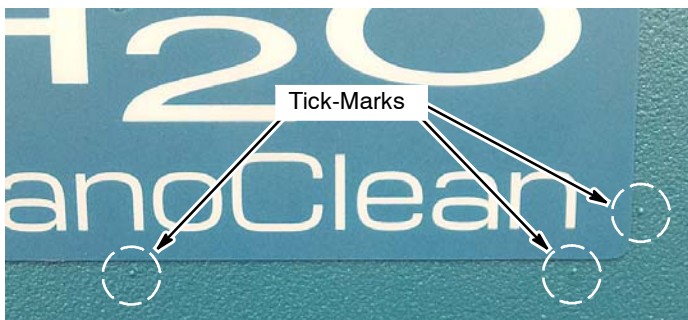
5. Replace the battery compartment shroud.

**INSTALL ec-H<sub>2</sub>O NanoClean LABELS**

Apply the new ec-H<sub>2</sub>O NanoClean labels on machine as described below (Figure 46).



ec-H<sub>2</sub>O NanoClean Label [1216520] Qty2



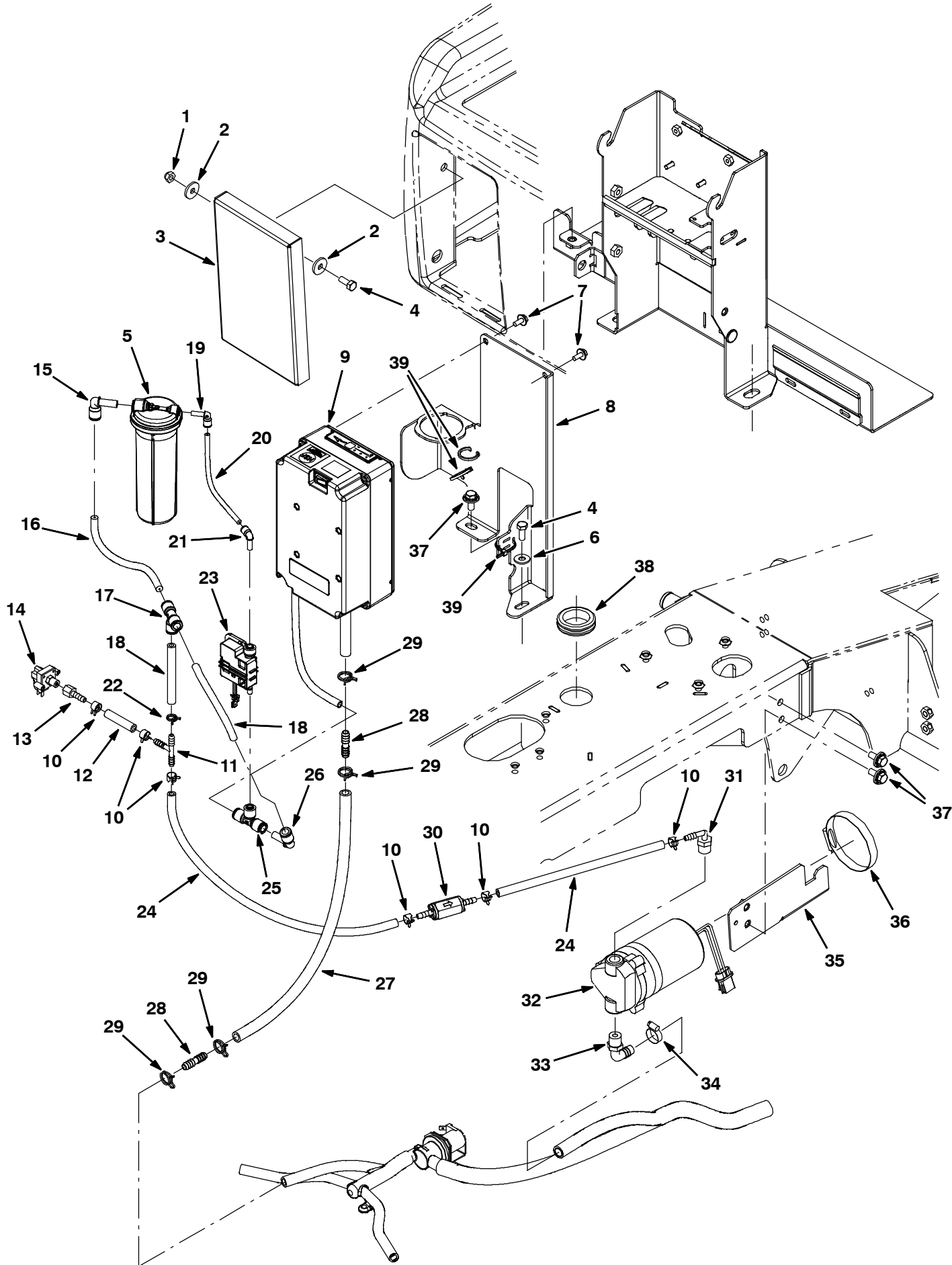
To properly position labels, align label with tick-marks in rotomold tank.



Attention, Solution Fill, ec-H<sub>2</sub>O Label [1050003]

**Fig. 46**

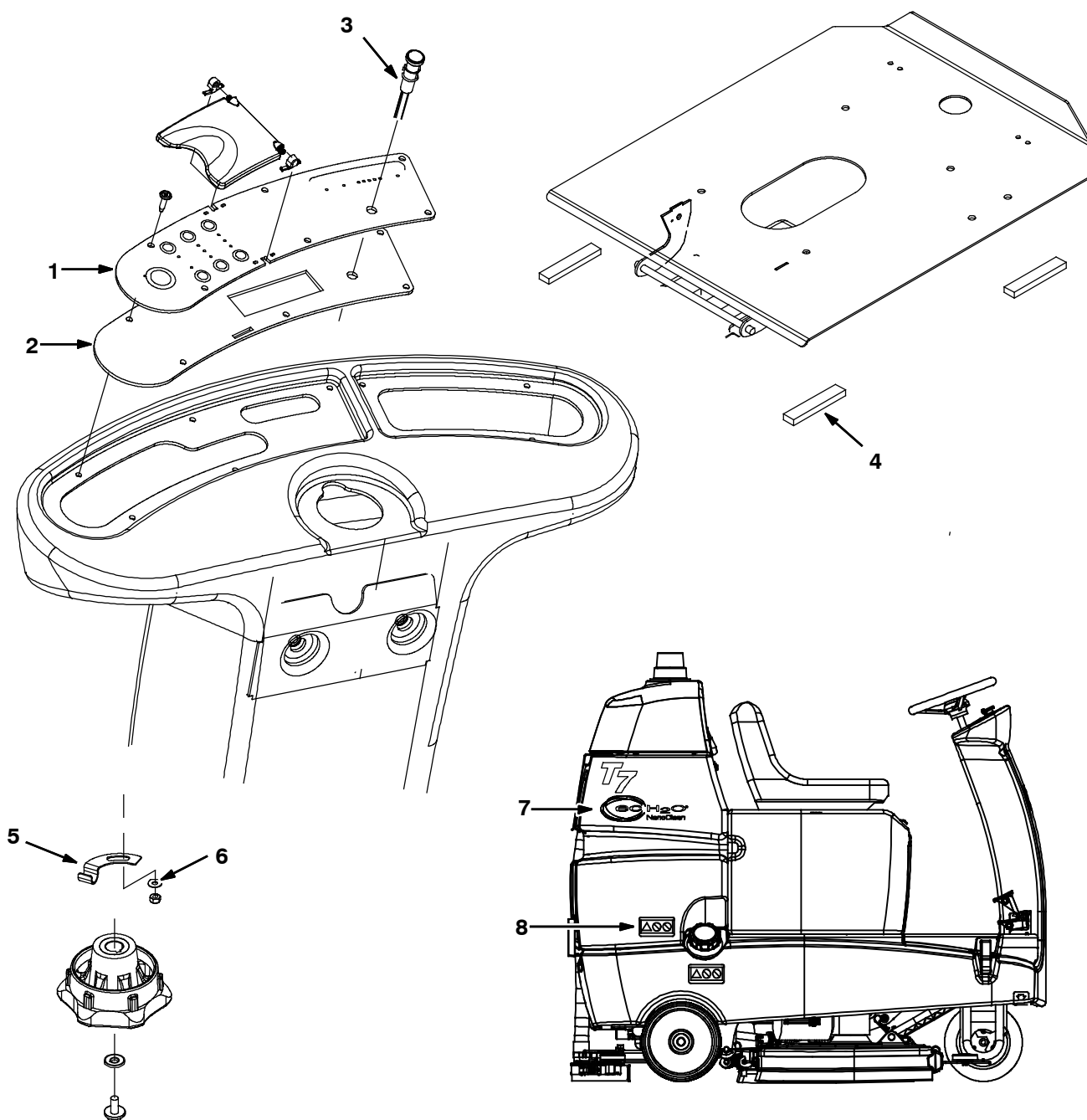
T7 ec-H2O NanoClean Affiliate Kit Parts List



**T7 ec-H2O NanoClean Affiliate Kit Parts List**

<b>Ref.</b>	<b>Part No.</b>	<b>Description</b>	<b>Qty.</b>
1	08713	Nut, Hex, Lock, M8 X 1.25, NI, Ss	2
2	1017218	Washer, Flat, 0.32b 1.00d .12, Ss	4
3	1051138	Bracket, Cover, Fast Opng [T7 Ec- H2o]	1
4	09740	Screw, Hex, M8 X 1.25 X 20, Ss	3
5	9013646	Cartridge, Ec- H2o Nanoclean Wcm, 270ml	1
6	01685	Washer, Flat, 0.38b 0.88d .08, Ss	1
7	1034731	Screw, Hex, M6 X 1.00 X 16, Ss, Sems	2
8	1216192	Bracket, Module, Ec- H2O [T7]	1
9	9011810	Module Kit, Replmt [Ec- H2o, B 02] (See Breakdowns)	1
10	603654	Clamp, Hose, Ear, .44d [Ctb]	6
11	150713	Fitting, Plstc, Tee, Bm04/Bm04/Bm04	1
12	575523000	Hose, Pvc, Brd, 0.25id 0.44od 043.5l,Clr	1
13	150520	Fitting, Brs, Str, Bm04/Pf02	1
14	1044415	Switch, Press, 20psi, Pm02	1
15	1215186	Fitting, Plstc, E90, Qf06/Qm06	1
16	9014146	Hose, Afmkt, Pvc, 0.06id .38od, 05ft	1
17	1212573	Fitting, Plstc, Tee, Qf06/Qf06/Qf06	1
18	1014987	Hose, Afmkt, Pvc, Clr, 0.25id, 01ft	1
19	1214339	Fitting, Plstc, E90, Qfo4/Qm04	1
20	9014147	Hose, Afmkt, Pvc, 0.06id .25od, 05ft	1
21	1214339	Fitting, Plstc, E90, Qfo4/Qm04	1
22	613735	Clamp, Hose, Wir, .40 - .42, Yel	1
23	1216973	Pump Assy, Dispenser	1
24	9014210	Hose, Afmkt, Pvc, Brd .25id .44od, 05ft	1
25	1212855	Fitting, Plstc, Tee, Qf04/Qf06/Qf06	1
26	1215186	Fitting, Plstc, E90, Qf06/Qm06	1
27	1006400	Hose, Afmkt, Pvc, Brd, 0.38id, 03ft, Clr	1
28	20950	Fitting, Plstc, Str, Bm06/Bm06	2
29	607775	Clamp, Hose, Wir, .63 - .66, Blk	4
30	1216879	Valve, Check, 0005psi Bm04/Bm04	1
31	150417	Fitting, Plstc, E90, Bm04/Pm06	1
32	1042495	Pump, Soltn, Ele, 24vdc, 35psi	1
33	64778	Fitting, Plstc, E90, Bm08/Pm06	1
34	54333	Clamp, Hose, Wormdrive, 0.31- 0.88d, .31w	1
35	1014617	Bracket, Pump, Soltn	1
36	43555	Clamp, Hose, Wormdrive, 2.50- 3.50d, .50w	1
37	1020341	Screw, Hex, M8 X 1.25 X 20, Ss, Sems	3
38	10632- 13	Grommet, Rbr, 1.50id, F/1.8h, .19 Matl	1
39	130773	Tie, Cable, Nyl, 11.0l, .14w, 3.0 Max. D	3

## T7 ec-H2O NanoClean Affiliate Kit Parts List



Ref.	Part No.	Description	Qty.
1	1050592	Panel, Instmt, Lh [Ec- H2o]	1
2	1052607	Gasket, Panl, Instmt, Lh, .13, Foam, Adh	1
3	1041822	Light, Led, .312d, 2 Volt [Tri- Color] (ec-H2O Model)	1
4	1046428	Seal, Afrmkt, Rbr, Clsd, Adh, 02ft (ec-H2O Model)	1
5	1052298	Bracket, Support, Hose [T7] (ec-H2O Model)	2
6	01684	Washer, Flat, 0.27b 0.69d .05, Ss (ec-H2O Model)	2
7	1216520	Label, Logo [Ech2o Nano]	2
8	1050003	Label [User, Attention, Ec- H2o]	1

**WIRE TERMINATION FOR "N" PLUG**

POSITION#	WIRE #
1	13V
2	53
3	53
4	22A
5	13W
6	13Z
7	13X
8	13Y
9	105
10	99
11	54A
12	54B
13	65
14	67

**WIRE TERMINATION FOR "N" PLUG**

WIRE No	AWG
13T	18
13V	18
13W	18
13X	18
13Y	18
13Z	18
13A	18
13B	18
22A	14
22B	14
22C	14
22D	14
22E	14
22F	14
22G	14
22H	14
22I	14
22J	14
22K	14
22L	14
22M	14
22N	14
22O	14
22P	14
22Q	14
22R	14
22S	14
22T	14
22U	14
22V	14
22W	14
22X	14
22Y	14
22Z	14
22AA	14
22AB	14
22AC	14
22AD	14
22AE	14
22AF	14
22AG	14
22AH	14
22AI	14
22AJ	14
22AK	14
22AL	14
22AM	14
22AN	14
22AO	14
22AP	14
22AQ	14
22AR	14
22AS	14
22AT	14
22AU	14
22AV	14
22AW	14
22AX	14
22AY	14
22AZ	14
22BA	14
22BB	14
22BC	14
22BD	14
22BE	14
22BF	14
22BG	14
22BH	14
22BI	14
22BJ	14
22BK	14
22BL	14
22BM	14
22BN	14
22BO	14
22BP	14
22BQ	14
22BR	14
22BS	14
22BT	14
22BU	14
22BV	14
22BW	14
22BX	14
22BY	14
22BZ	14
22CA	14
22CB	14
22CC	14
22CD	14
22CE	14
22CF	14
22CG	14
22CH	14
22CI	14
22CJ	14
22CK	14
22CL	14
22CM	14
22CN	14
22CO	14
22CP	14
22CQ	14
22CR	14
22CS	14
22CT	14
22CU	14
22CV	14
22CW	14
22CX	14
22CY	14
22CZ	14
22DA	14
22DB	14
22DC	14
22DD	14
22DE	14
22DF	14
22DG	14
22DH	14
22DI	14
22DJ	14
22DK	14
22DL	14
22DM	14
22DN	14
22DO	14
22DP	14
22DQ	14
22DR	14
22DS	14
22DT	14
22DU	14
22DV	14
22DW	14
22DX	14
22DY	14
22DZ	14
22EA	14
22EB	14
22EC	14
22ED	14
22EE	14
22EF	14
22EG	14
22EH	14
22EI	14
22EJ	14
22EK	14
22EL	14
22EM	14
22EN	14
22EO	14
22EP	14
22EQ	14
22ER	14
22ES	14
22ET	14
22EU	14
22EV	14
22EW	14
22EX	14
22EY	14
22EZ	14
22FA	14
22FB	14
22FC	14
22FD	14
22FE	14
22FF	14
22FG	14
22FH	14
22FI	14
22FJ	14
22FK	14
22FL	14
22FM	14
22FN	14

WIRE No	AWG
13V	18
13V	18
13V	18
13V	18
13V	18
13V	18
13V	18
22	18
22A	18
22B	18
52	14
54	14
54A	18
54B	18
64	18
67	18
67	18
82	18
95	18
95	18
92	18
104	18
104A	18
104B	18
105	18
105A	18
105B	18
105C	18
105D	18
105E	18
105F	18
105G	18
105H	18
105I	18
105J	18
105K	18
105L	18
105M	18
105N	18
105O	18
105P	18
105Q	18
105R	18
105S	18
105T	18
105U	18
105V	18
105W	18
105X	18
105Y	18
105Z	18
105AA	18
105AB	18
105AC	18
105AD	18
105AE	18
105AF	18
105AG	18
105AH	18
105AI	18
105AJ	18
105AK	18
105AL	18
105AM	18
105AN	18
105AO	18
105AP	18
105AQ	18
105AR	18
105AS	18
105AT	18
105AU	18
105AV	18
105AW	18
105AX	18
105AY	18
105AZ	18
105BA	18
105BB	18
105BC	18
105BD	18
105BE	18
105BF	18
105BG	18
105BH	18
105BI	18
105BJ	18
105BK	18
105BL	18
105BM	18
105BN	18
105BO	18
105BP	18
105BQ	18
105BR	18
105BS	18
105BT	18
105BU	18
105BV	18
105BW	18
105BX	18
105BY	18
105BZ	18
105CA	18
105CB	18
105CC	18
105CD	18
105CE	18
105CF	18
105CG	18
105CH	18
105CI	18
105CJ	18
105CK	18
105CL	18
105CM	18
105CN	18
105CO	18
105CP	18
105CQ	18
105CR	18
105CS	18
105CT	18
105CU	18
105CV	18
105CW	18
105CX	18
105CY	18
105CZ	18
105DA	18
105DB	18
105DC	18
105DD	18
105DE	18
105DF	18
105DG	18
105DH	18
105DI	18
105DJ	18
105DK	18
105DL	18
105DM	18
105DN	18
105DO	18
105DP	18
105DQ	18
105DR	18
105DS	18
105DT	18
105DU	18
105DV	18
105DW	18
105DX	18
105DY	18
105DZ	18
105EA	18
105EB	18
105EC	18
105ED	18
105EE	18
105EF	18
105EG	18
105EH	18
105EI	18
105EJ	18
105EK	18
105EL	18
105EM	18
105EN	18
105EO	18
105EP	18
105EQ	18
105ER	18
105ES	18
105ET	18
105EU	18
105EV	18
105EW	18
105EX	18
105EY	18
105EZ	18
105FA	18
105FB	18
105FC	18
105FD	18
105FE	18
105FF	18
105FG	18
105FH	18
105FI	18
105FJ	18
105FK	18
105FL	18
105FM	18
105FN	18
105FO	18
105FP	18
105FQ	18
105FR	18
105FS	18
105FT	18
105FU	18
105FV	18
105FW	18
105FX	18
105FY	18
105FZ	18
105GA	18
105GB	18
105GC	18
105GD	18
105GE	18
105GF	18
105GG	18
105GH	18
105GI	18
105GJ	18
105GK	18
105GL	18
105GM	18
105GN	18
105GO	18
105GP	18
105GQ	18
105GR	18
105GS	18
105GT	18
105GU	18
105GV	18
105GW	18
105GX	18
105GY	18
105GZ	18
105HA	18
105HB	18
105HC	18
105HD	18
105HE	18
105HF	18
105HG	18
105HH	18
105HI	18
105HJ	18
105HK	18
105HL	18
105HM	18
105HN	18
105HO	18
105HP	18
105HQ	18
105HR	18
105HS	18
105HT	18
105HU	18
105HV	18
105HW	18
105HX	18
105HY	18
105HZ	18
105IA	18
105IB	18
105IC	18
105ID	18
105IE	18
105IF	18
105IG	18
105IH	18
105II	18
105IJ	18
105IK	18
105IL	18
105IM	18
105IN	18
105IO	18
105IP	18
105IQ	18
105IR	18
105IS	18
105IT	18
105IU	18
105IV	18
105IW	18
105IX	18
105IY	18
105IZ	18
105JA	18
105JB	18
105JC	18
105JD	18
105JE	18
105JF	18
105JG	18
105JH	18
105JI	18
105JJ	18
105JK	18
105JL	18
105JM	18
105JN	18
105JO	18
105JP	18
105JQ	18
105JR	18
105JS	18
105JT	18
105JU	18
105JV	18
105JW	18
105JX	18
105JY	18
105JZ	18
105KA	18
105KB	18
105KC	18
105KD	18
105KE	18
105KF	18
105KG	18
105KH	18
105KI	18
105KJ	18
105KL	18
105KM	18
105KN	18
105KO	18
105KP	18
105KQ	18
105KR	18
105KS	18
105KT	18
105KU	18
105KV	18
105KW	18
105KX	18
105KY	18
105KZ	18
105LA	18
105LB	18
105LC	18
105LD	18
105LE	18
105LF	18
105LG	18
105LH	18
105LI	18
105LJ	18
105LK	18
105LL	18
105LM	18
105LN	18
105LO	18
105LP	18
105LQ	18
105LR	18
105LS	18
105LT	18
105LU	18
105LV	18
105LW	18
105LX	18
105LY	18
105LZ	18
105MA	18
105MB	18
105MC	18
105MD	18
105ME	18
105MF	18
105MG	18
105MH	18
105MI	18
105MJ	18
105MK	18
105ML	18
105MN	18
105MO	18
105MP	18
105MQ	18
105MR	18
105MS	18
105MT	18
105MU	18
105MV	18
105MW	18
105MX	18
105MY	18
105MZ	18
105NA	18
105NB	18
105NC	18
105ND	18
105NE	18
105NF	18
105NG	18
105NH	18
105NI	18
105NJ	18
105NK	18
105NL	18
105NM	18
105NN	18
105NO	18
105NP	18
105NQ	18
105NR	18
105NS	18
105NT	18
105NU	18
105NV	18
105NW	18
105NX	18
105NY	18
105NZ	18
105OA	18
105OB	18
105OC	18
105OD	18
105OE	18
105OF	18
105OG	18
105OH	18
105OI	18
105OJ	18
105OK	18
105OL	18
105OM	18
105ON	18
105OO	18
105OP	18
105OQ	18
105OR	18
105OS	18
105OT	18
105OU	18
105OV	18
105OW	18
105OX	18
105OY	18
105OZ	18
105PA	18
105PB	18
105PC	18
105PD	18
105PE	18
105PF	18
105PG	18
105PH	18
105PI	18
105PJ	18
105PK	18
105PL	18
105PM	18
105PN	18
105PO	18
105PP	18
105PQ	18
105PR	18
105PS	18
105PT	18
105PU	18
105PV	18
105PW	18
105PX	18
105PY	18
105PZ	18
105QA	18
105QB	18
105QC	18
105QD	18
105QE	18
105QF	18
105QG	18
105QH	18
105QI	18
105QJ	18
105QK	18
105QL	18
105QM	18
105QN	18
105QO	18
105QP	18
105QQ	18
105QR	18
105QS	18
105QT	18
105QU	18
105QV	18
105QW	18
105QX	18
105QY	18
105QZ	18
105RA	18
105RB	18
105RC	18
105RD	18
105RE	18
105RF	18
105RG	18
105RH	18
105RI	18
105RJ	18
105RK	18
105RL	18
105RM	18
105RN	18
105RO	18
105RP	18
105RQ	18
105RR	18
105RS	18
105RT	18
105RU	18
105RV	18
105RW	18
105RX	18
105RY	18
105RZ	18
105SA	18
105SB	18
105SC	18
105SD	18
105SE	18
105SF	18
105SG	18
105SH	18
105SI	18
105SJ	18
105SK	18
105SL	18
105SM	18
105SN	18
105SO	18
105SP	18
105SQ	18
105SR	18
105SS	18
105ST	18
105SU	18
105SV	18
105SW	18
105SX	18
105SY	18
105SZ	18
105TA	18
105TB	18
105TC	18
105TD	18
105TE	18
105TF	18
105TG	18
105TH	18
105TI	18
105TJ	18
105TK	18
105TL	18
105TM	18
105TN	18
105TO	18
105TP	18
105TQ	18
105TR	18
105TS	18
105TT	18
105TU	18
105TV	18
105TW	18
105TX	18
105TY	18
105TZ	18
105UA	18
105UB	18
105UC	18
105UD	18
105UE	18
105UF	18
105UG	18
105UH	18
105UI	18
105UJ	18
105UK	18
105UL	18
105UM	18
105UN	18
105UO	18
105UP	18
105UQ	18
105UR	18
105US	18
105UT	18
105UU	18
105UV	18
105UW	18
105UX	18
105UY	18
105UZ	18
105VA	18
105VB	18
105VC	18
105VD	18
105VE	18
105VF	18
105VG	18
105VH	18
105VI	18
105VJ	18
105VK	18
105VL	18
105VM	18
105VN	18
105VO	18
105VP	18
105VQ	18
105VR	18
105VS	18
105VT	18
105VU	18
105VV	

POSITION#	WIRE #
1	13V
2	95
3	88
4	22A
5	13W
6	13X
7	13Y
8	105
9	99
10	64
11	54A
12	54B
13	66
14	67

WIRE TERMINATION FOR "N" PLUG

Qty.
1

1



1

